



The Biggest Federal Land Giveaway You've Never Heard Of

The Department of Interior's Bureau of Land Management (BLM) is aggressively opening wide swaths of Alaska federal land to mining. The former Department of Interior's Assistant Secretary of Land and Minerals, Joe Balash, signed directives in 2018-19 revoking federal public land protections nearly 50 years old, opening 1.3-million of acres of BLM lands to mineral entry and easing the conveyance to the state, Alaska Native corporations thereby making them available for mining claim staking. When mining claims are staked, any interested member of the public would need to search online to be able to find out about it. There is no outreach by agencies for public comments.

This is just the tip of the iceberg. In Alaska, state and federal officials are in lock-step, sharing an anti-public-land ideology and ramping up what could be the largest public land giveaway to private and foreign interests in contemporary American history. The opening of millions of acres of Alaska's BLM lands to development is considered to be the biggest "sleeper" issue currently facing our federal lands nationwide.

TIMING: Between October 2018 and August 2019, nearly 2 million acres of BLM Alaska land were quietly opened to mining by the Department of Interior. The remaining BLM Alaska lands, **over 46 million acres**, will be opened in small "packages," according to BLM — likely 1-3 million acres at a time, over the next six to 12 months. The remaining active Resource Management Plan processes, which will determine the future for over 27 million acres, are being fast tracked and will be completed by early 2020. These new plans will likely authorize opening 99% of the lands to mineral entry and remove community-supported Areas of Critical Environmental Concern.

WHAT'S AT STAKE: Important and broadly diverse wildlife habitat corridors, hunting and fishing grounds, food security for over 100 Alaska Native communities, and wilderness-quality lands that border rivers, national parks, wildlife refuges, and forests.



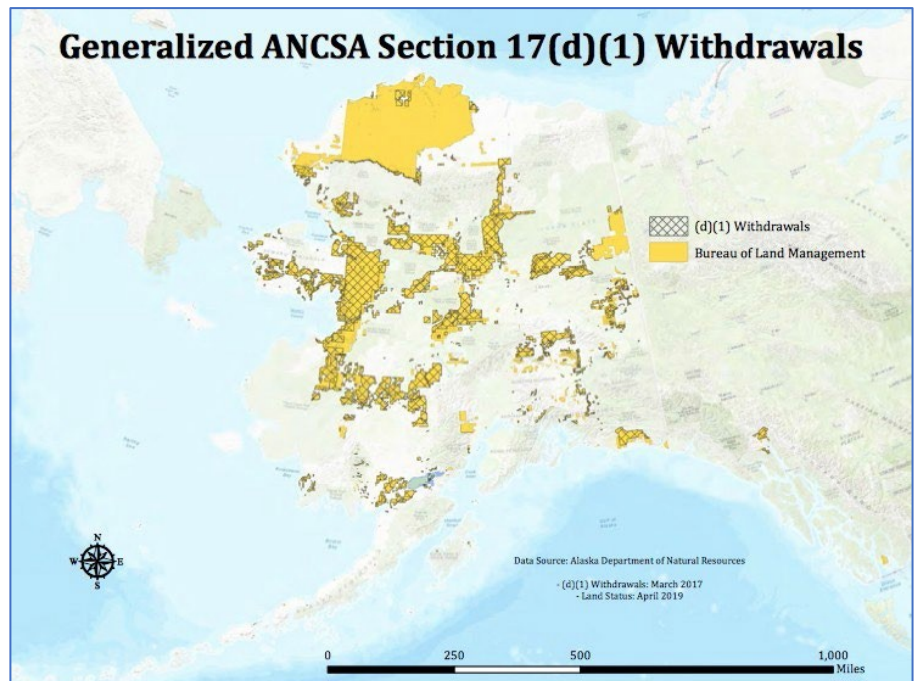
CULTURE AND HISTORY:

Alaska Native communities from the Canadian border to the Bering Sea are threatened by these giveaways. These communities are home to federally recognized Tribes and users of traditional land managed by BLM that will be opened to mining overnight. These communities were deeply vested in BLM's Resource Management Plan processes and are on the record with a unified voice telling BLM that clean water, wildlife, future generations and the wild food subsistence economy should be the priority for these valuable lands. With the blanket lifting of

the public land order, these traditional lands will be open to mining activities without any public notice or process.

WILDLIFE: Diverse, intact, ecosystems from high alpine tundra to the longest largest river watershed in North America, coastal estuaries and highly productive salmon streams, caribou calving grounds, and nationally and internationally recognized Important Bird Areas are all at risk. Alaska Native subsistence users depend on the health and productivity of these lands, as do recreational hunters and fishermen. Recreational opportunities such as National Wild and Scenic Rivers, hiking routes, and the Iditarod Trail system attract recreationists from around the world.

THE SPIN: Former Assistant Secretary Balash, Alaska Governor Dunleavy and other publicly-elected officials claim lifting the PLOs will allow the federal government to make good on long standing commitments to the State of Alaska and Native corporations. Note again, without any notice or process with Alaska's tribes and the general public.



FOR MORE INFORMATION: Rachel James (rachel@salmonstate.org), Salmon State, 907-302-0206 and Natalie Dawson (ndawson@audubon.org), National Audubon Society, 907-227-3407